

志 信

Tze Shin transportation service include domestic container 、 truck transportation & terminal 、 petrochemistry and dangerous goods transport as well as bulk logistic etc.



TZE SHIN International Co. Ltd.

2024 Investor Conference

<https://www.tsgroup.com.tw/>

Stock code : 2611

Disclaimer

This presentation is prepared according to the reviewed financial Statements by CPA and the financial numbers hereby are based on Regulations Governing the Preparation of Financial Reports by Securities and IFRS, please refer to the published financial Statements for full content.

The presentation may contain forward-looking information and may differ materially from the actual results.

TSI does not warranty as to the accuracy or completeness of such information and nor assume any undertaking further information becomes available or in light of changing circumstances. You shall not place undue reliance on any forward-looking information.



<https://www.tsgroup.com.tw/>

Stock code : 2611

1

Agenda



01 | Company Profile



02 | Operation Overview



03 | Financial Performance



04 | Future Outlook



01



Company Profile

TZE SHIN INT'L

Company Profile

- Company Name : TZE SHIN International Co. Ltd.
- Established on : November 15th,1973
- Date of Listing : October 28th,1993
- Paid-in Capital : NTD\$ 1,890,022,720
- Business Segment : Truck & Container Transportation
Construction
Tourism & Leisure



TZE SHIN INT'L

<https://www.tsgroup.com.tw/>

Stock code : 2611

4

Business philosophy

In search of excellence and everlasting management

Sincerity and customer service oriented

Determine -

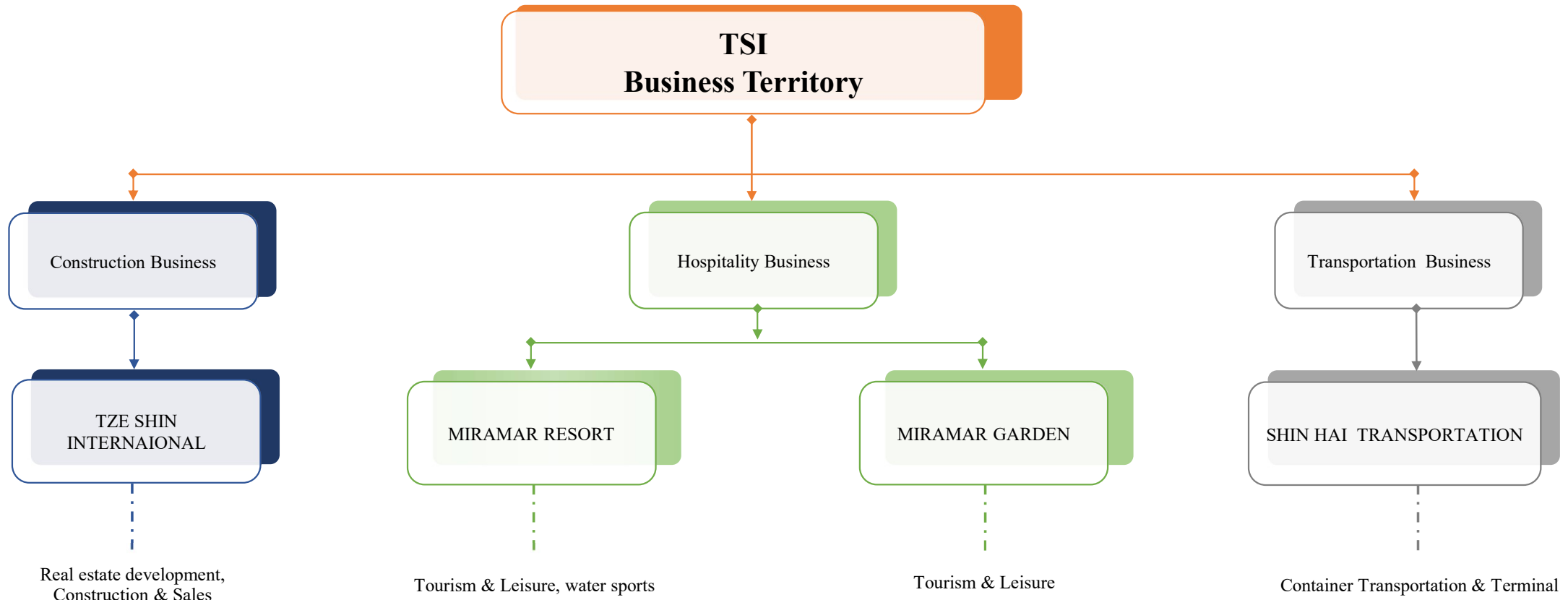
Pursuit of excellence/
Sustainable development

Integrity -

Integrity first/Service-oriented

TZE SHIP

Core Business



TZE SHIN INT'L

02



Operation Overview

TZE SHIN INT'L

Business Segments

The Tze-Shin Company mainly focuses on container transportation, and the business scope spans construction, tourism and leisure, commercial commodity trading, and etc.

The company adheres to the business philosophy of pursuing excellence and sustainability, and is committed to achieving the triple-win goal of customer satisfaction, employee satisfaction and shareholder satisfaction.



TZE SHIN INT'L

Operation Overview

– Transportation Business

VALUE
01



The Tze-Shin transportation team's services include long-distance cargo transport across the province, portside container haulage and oil tank container transportation.

VALUE
02



We have set up transportation bases in the northern, central and southern provinces to provide more economical and timely transportation services. Our high-level and detailed quality management system and reduced operating costs will bring the greatest benefits to our customers.

VALUE
03



Tze Shin upholds the core value of safety and customers first to provide a fast, safe, and trustworthy service.

SHIN INT'L

Inland Fleets and Services



Long-distance transshipment

Provide long-distance container haulage between Keelung, Taoyuan, Taichung, Kaohsiung, etc.



Shipside transshipment

Provide container haulage between shipside and inland container yards.



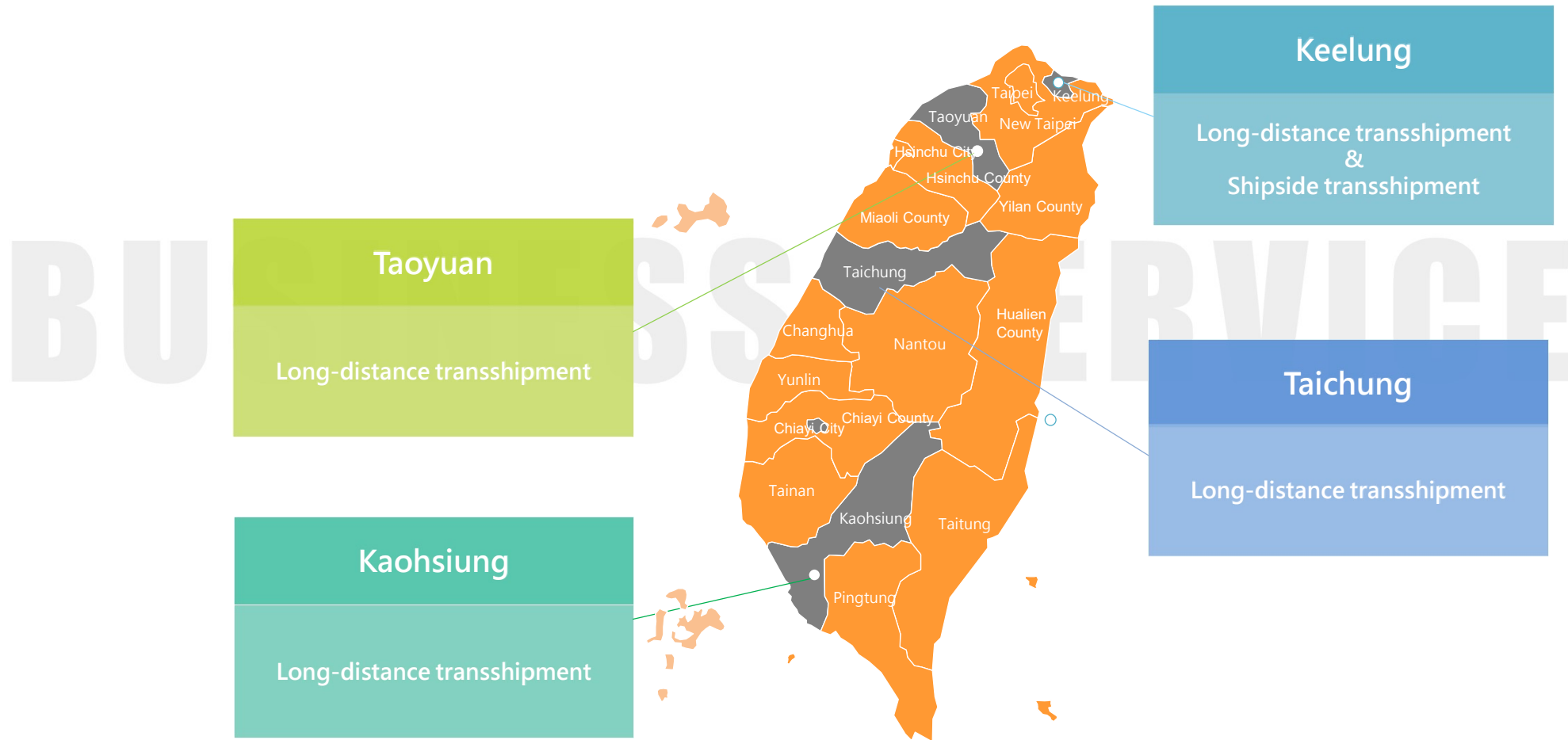
Transportation of Oil container

Provide oil container haulage between container yards.

BUSINESS SERVICE

Operation Overview

-Transportation Business



TZE SHIN INT'L

BU

SS SERVICE

Operation Overview

-Construction Business



Factory



Condo/
apartment



Shopping
center



Leisure
residence

The Construction department is committed to the development, planning for construction of factories, shopping malls and residential buildings; Mainly operating area are around of Taipei, Hsinchu and Taichung. In recent years, we have developed high-quality leisure and vacation residence communities to cater to the future market.



Operation Overview -Construction Business

“TzeShin Yuntong” is located in Zhunan Township, Miaoli County, with a site area of approximately 450 ping (about 1,488 square meters). The development plans for 16 villa-style homes.

The site is situated at the intersection of Kezhuan 7th Road and Gongyi Road, next to Datong High School, and is directly in front of TSMC's first row of buildings. The area directly in front of the site features a linear park, and the community benefits from well-established living amenities.



Operation Overview

-Hospitality Business

Miramar Hotel Group built up as classic European style combined with modern sophistication, by providing professional service, global view and treating customer as family.

In addition to joint folklore festival and participate government promotional campaign to win international and domestic business recognition.



MIRAMAR GARDEN TAIPEI



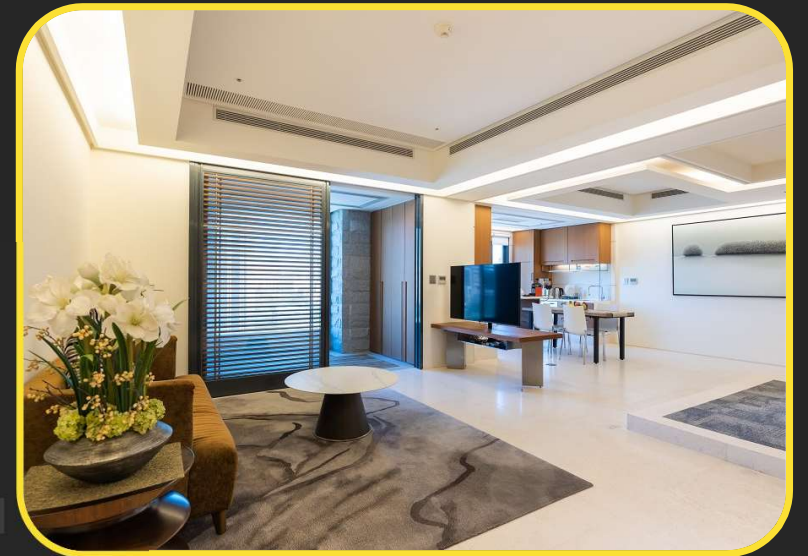
Diversified software and hardware facilities services

Provide comprehensive and complete service requirements, covering rich and exquisite delicacies, well-equipped fitness clubs, first-class business meeting facilities. Additionally, we provide multi-functional services such as parking, laundry, in-room dining, business secretarial services, babysitting, and private concierge. Our services are designed to meet the diverse needs of both leisure and vacation travelers as well as business professionals.

Operation Overview -Hospitality

The Miramar Garden Hotel initiated a comprehensive five-month renovation project in November 2022. It reopened with brand new luxurious guest rooms on January 18, 2023, to welcome guests.

In 2023, the annual housing rate was 73%. By the first half of 2024, the housing rate had already reached a high level, breaking the operational performance record since the opening.



TZE SHIN INT'L

Operation Overview -Hospitality

The Garden Terrace has been transformed into a romantic European-style garden steakhouse, offering a seafood semi-buffet dining experience. With a dining space featuring a soaring height of 3.7 meters, guests can enjoy the rare greenery and beautiful scenery of Taipei city while dining.

The Miramar Garden Hotel is committed to providing heartfelt service to solidify its existing customer base and actively adopts innovative marketing strategies to attract new customers. With the principle of "service first, customer foremost," the hotel aims to provide customers with services that are "considerate, warm, and comfortable."



03



Financial Performance

TZE SHIN INT'L

Income Statements(consolidated)

In Thousands of NTD

Items	2024.06.30	2023.12.31	2023.06.30
Current assets	2,834,374	2,553,311	2,204,713
Non-current assets	1,736,789	1,646,166	1,695,880
Total assets	4,571,163	4,199,477	3,900,593
Current liabilities	798,444	401,479	546,642
Non-current liabilities	553,788	558,973	560,598
Total liabilities	1,352,232	960,452	1,107,240
Total equity of the owner of the Company	2,992,937	3,001,080	2,566,545
Non-controlling interests	225,994	237,945	226,808
Total equity	3,218,931	3,239,025	2,793,353
Total Liabilities and Equity	4,571,163	4,199,477	3,900,593

Income Statements(consolidated)

In Thousands of NTD

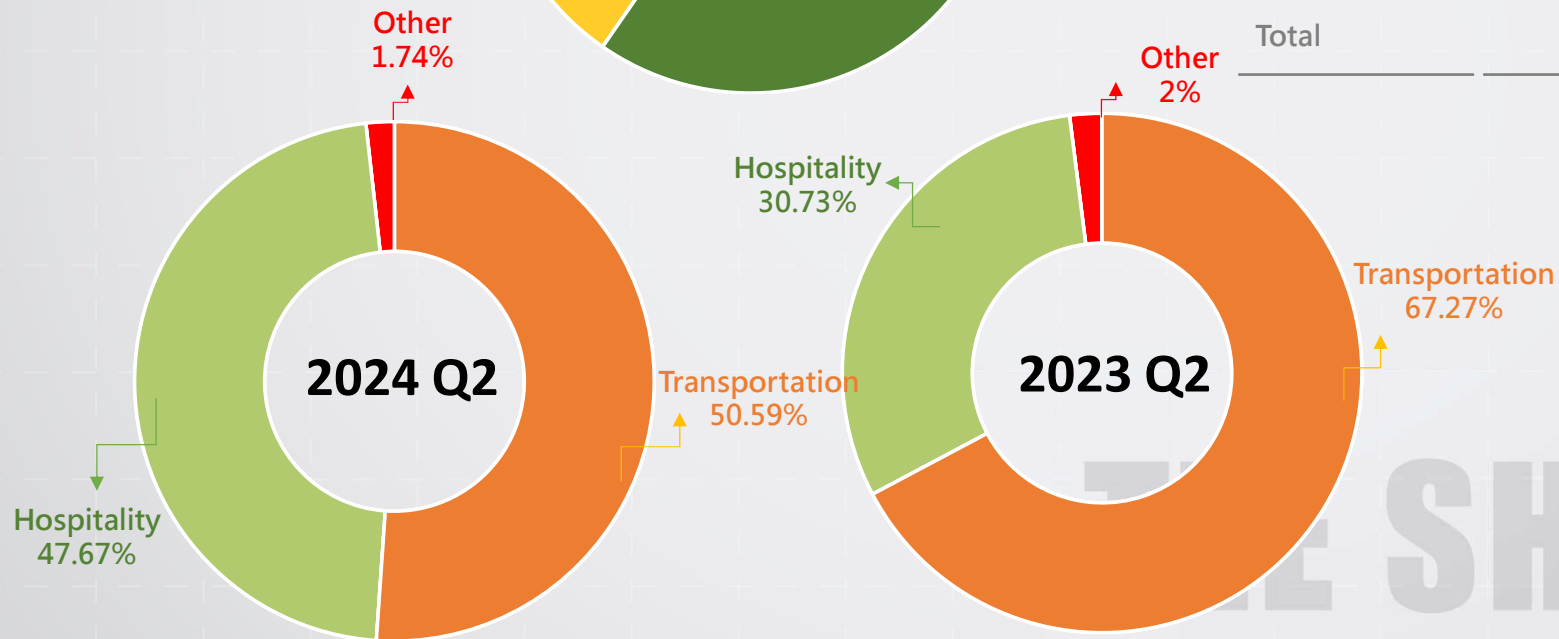
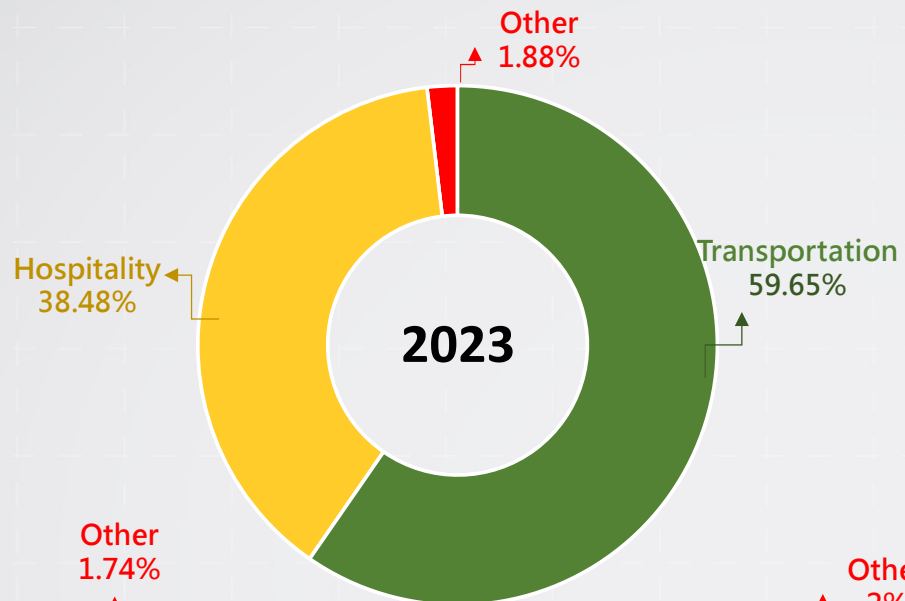
Items	2024 Q2	2023	2023 Q2
Operating Revenue	332,842	617,327	289,427
Operating Costs	236,895	471,448	238,156
Gross Profit	95,947	145,879	51,271
Operating Expenses	94,724	193,826	80,053
Operating Income (Loss)	1,223	(47,947)	(28,782)
Non-operating Income and Expenses	297,786	527,847	100,167
Income before Tax	299,009	479,900	71,385
income tax expense(benefit)	4,574	4,069	(1,876)
Net Income	294,435	475,831	73,261
Consolidated Net Income Attributed to Stockholders of the Company	285,917	467,964	75,596
EPS(Unit: NT\$) (Note)	1.51	2.48	0.40

Note:When calculating earnings per share, the impact of gratis allotment has been retroactively adjusted.

Core Business

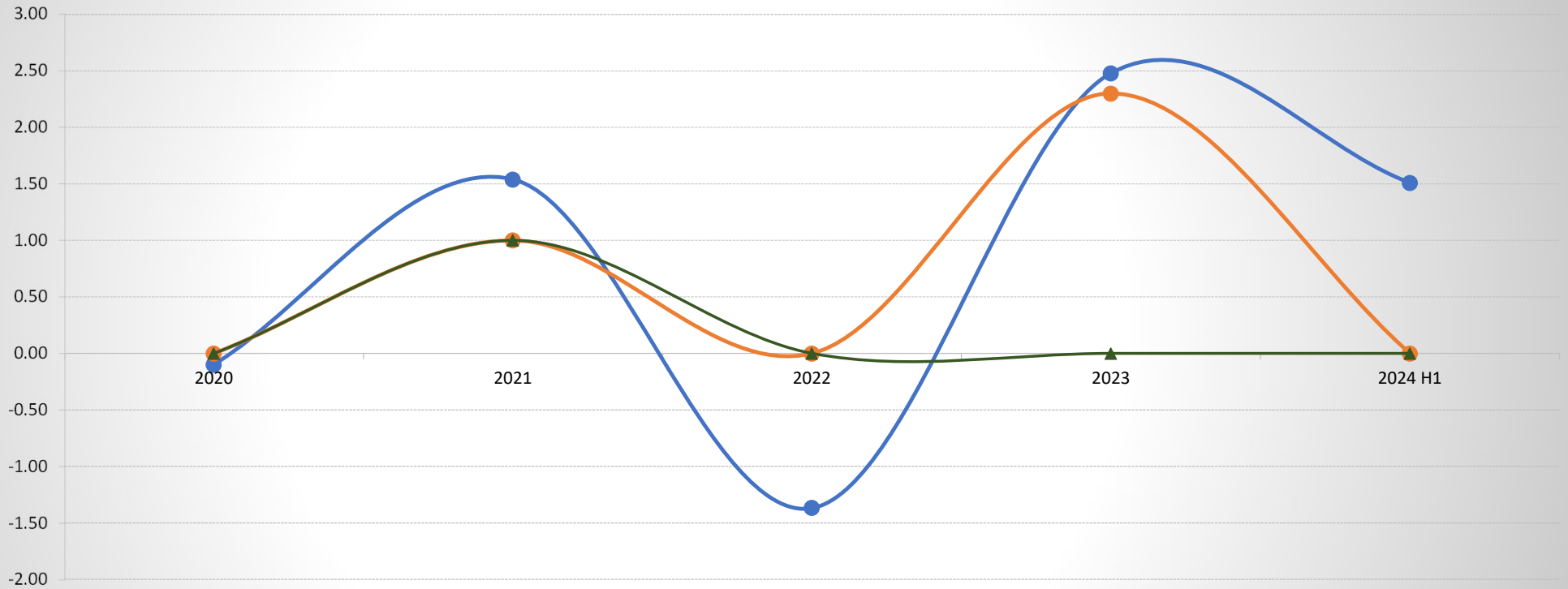
In Thousands of NTD

	2023	2024 Q2	2023 Q2
Transportation	368,207	168,378	194,694
Hospitality	237,533	158,670	88,934
Other	11,587	5,794	5,799
Total	617,327	332,842	289,427



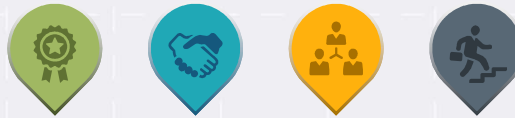
THE SHIN INT'L

OPERATING Results



Item/Year	2020	2021	2022	2023	2024 H1
EPS	(0.10)	1.54	(1.37)	2.48	1.51
Cash Dividend	-	1	-	2.3	-
Stock Dividend	-	1	-	-	-

04



Future Outlook

TZE SHIN INT'L

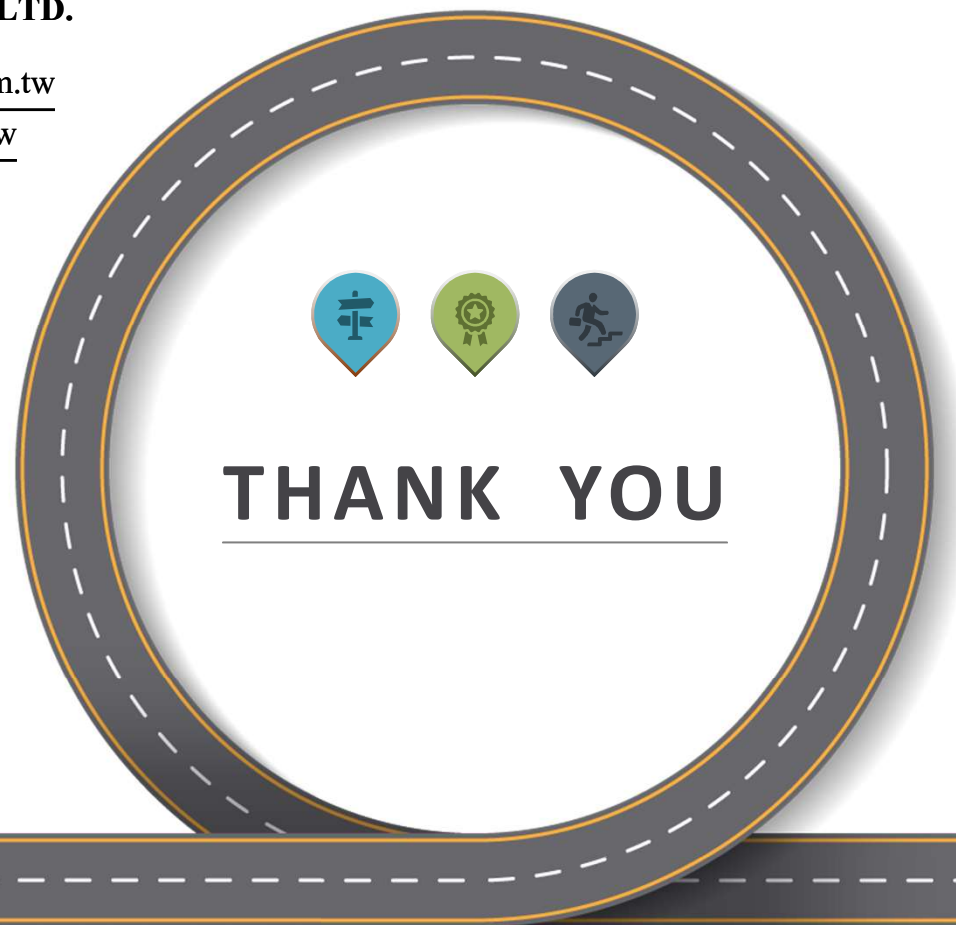
Future Outlook

- In terms of the transportation business, we will strive to consolidate existing customer relationships, stabilize operating income, expand business through alliances or integration, and actively expand new types of transportation service opportunities such as commercial logistics and freezer container shipments.
- In terms of construction and development, we carefully evaluate market trends, professionally evaluate development sites and operating areas, and aim to create stable and long-term development. In the future, the company will aim to develop and grow in a diversified way, such as creating quality housing that is well-received and reputed by the market through urban renewal projects.
- Diversifying into hospitality industry, by the Miramar Hotel Group brand value and management skills to provide better services and know-how for further business success.
- By combining the cross-industry experience and resources of related companies , committed to expanding investment scope , and evaluate domestic and overseas investment projects , especially focus in green industry and ESG related , in order to achieve a diversified business model to create group synergy .

 **TZE SHIN INTERNATIONAL CO., LTD.**

website address : <https://www.tsgroup.com.tw>

search website : <https://mops.twse.com.tw>



TZE SHIN INT'L